

# Sastri College

1929 - 2019

## CONSUMER STUDIES

GRADE: 11

MARCH EXAMINATION

TIME: 1 HOUR

EXAMINER: K. DEVANAND

MODERATOR: G.T. MOODLEY

TOTAL: 75 MARKS

<b>QUESTION ONE:</b>	<b>20 MARKS</b>
<b>QUESTION TWO:</b>	<b>20 MARKS</b>
<b>QUESTION THREE:</b>	<b>5 MARKS</b>
<b>QUESTION FOUR:</b>	<b>30 MARKS</b>
<b>TOTAL : 75 MARKS</b>	

1. THIS QUESTION PAPER CONSISTS OF 7 PAGES AND FOUR QUESTIONS
2. ALL QUESTIONS ARE COMPULSORY AND MUST BE ANSWERED CORRECTLY ACCORDING TO THE NUMBERING SYSTEM USED IN THE QUESTION PAPER
3. WRITE NEATLY AND LEGIBLY

QUESTION	LEVEL 1 (30%)	LEVEL 2 (50%)	LEVEL 3 (20%)	TOTAL	TIME (MINUTES)
1	6	10	4	20	15
2	6	10	4	20	5
3	1	3	1	5	5
4	9	15	6	30	35
PERCENTAGE	30	50	20	100%	60 MINUTES

**QUESTION 1: MULTIPLE CHOICE**

1.1 Various options are given as possible answers to the following questions. Choose the answer and write only the letter (A–D) next to the question number (1.1.1–1.1.18) in the ANSWER BOOK, for example 1.1.19 C.

1.1.1 To create a casual, relaxed effect in a home ... lines should be used.

- A. horizontal
- B. vertical
- C. curved
- D. diagonal

1.1.2 Shape refers to ...

- A. an area enclosed by lines.
- B. the space within the shape.
- C. the unoccupied area between the lines.
- D. the surface quality of an object.

1.1.3 To create a calm, restful ambience in a room, use ...

- A. diagonal lines.
- B. warm colours.
- C. cool colours.
- D. smooth, shiny surfaces.

1.1.4 Identify the secondary colours:

- A. Orange, green, purple
- B. Red, blue, orange
- C. Yellow, purple, green
- D. Blue, red, yellow

1.1.5 Different objects that make up the design are arranged in a circle around a central point.

- A. Symmetrical balance
- B. Asymmetrical balance
- C. Radiation
- D. Radial balance

1.1.6 Which colour combination should be used to achieve an analogous colour harmony?

- A. Cream, gold and golden brown
- B. White, navy blue and red
- C. Blue-purple, purple and red-purple
- D. Brown, orange and blue

1.1.7 How many secondary colours are on the colour wheel?

- A. 5
- B. 6
- C. 3
- D. 4

1.1.8 Complex multi-coloured designs woven with coloured weft yarns and white warp yarns.

- A. Dobby weave
- B. Jacquard weave
- C. Basket weave
- D. Twill weave

1.1.9 Sanforising is a process that...

- A. Reduces piling
- B. Conducts electricity
- C. Makes fabric crease resistant
- D. Prevents garments sinking in the wash

1.1.10 The following statement is not considered a statement of budgeting

- A. Prioritize the families basic needs
- B. File your purchase slips with guarantees
- C. Put money aside for unexpected incidents
- D. Pay the credit card account when you can.

**(10x2) =20**

**QUESTION 2 MATCHING HOUSEHOLD BUDGETING (20 MARKS)**

2.1 Match an expenses category in COLUMN A with an example of this type of expense in COLUMN B. Write only the letter (A–F) next to the question number (2.1.1–2.1.5) in the ANSWERBOOK, for example 2.1.2 G.

<b><u>COLUMN A</u></b> <b><i>Expense category</i></b>	<b><u>COLUMN B</u></b> <b><i>Example of this type of expense</i></b>
2.1.1 Installments on a home loan	A. Savings account
2.1.2 Cell phone account	B. Optional expense
2.1.3 Birthday presents	C. Fixed expense
2.1.4 Replacing a damaged bicycle tyre	D. Temporary expense
2.1.5 Money that earns interest over time	E. Possibility of success.
	F. Variable expense
	G. Emergency expense

**(5X2=10)**

2.2 Complete the following table on different sources of income.

<b>Type of income</b>	<b>Source of income</b>
2.2.1 Income received from Sasol Inzalo shares.	
2.2.2 Income received from Stokvel	
2.2.3 Income received from selling Tupperware products	
2.2.4 Income received from government for Old Age.	
2.2.5 Income received from washing cars.	

**(5 x2=10)**

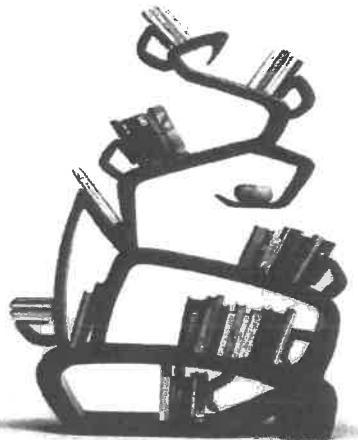
**QUESTION THREE- DESIGN PRINCIPALS AND ELEMENTS (5 MARKS)**

3. Identify the most dominant types of line in the following pictures:

A



B

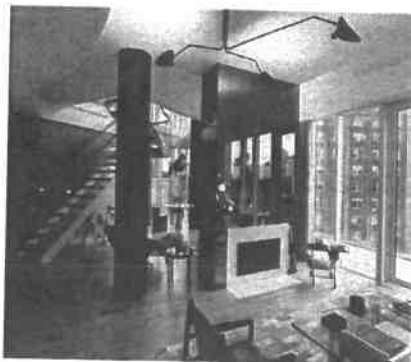


C



D

E



**(5X1=5)**



**QUESTION 4: CLOTHING**

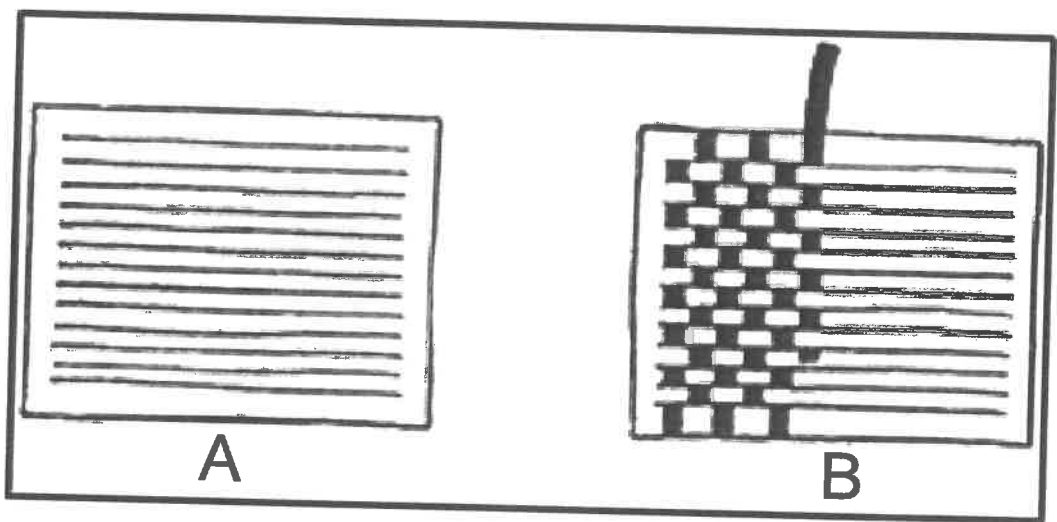
4.1 Explain the following terms:

4.1.1 Primary colour scheme (2)

4.1.2 Hue of colour (1)

4.1.3 Value of colour (2)

4.2 4.2.1 Identify and name the method of fabric construction illustrated in sketch B below.



(2)

4.2.2 Fabric finishes are done to alter and improve the appearance and performance of fabrics. Explain how mercerising improves the performance of a fabric.

(3x1=3) (3)

4.3 Explain how the following fabric properties make fabrics more comfortable to wear:

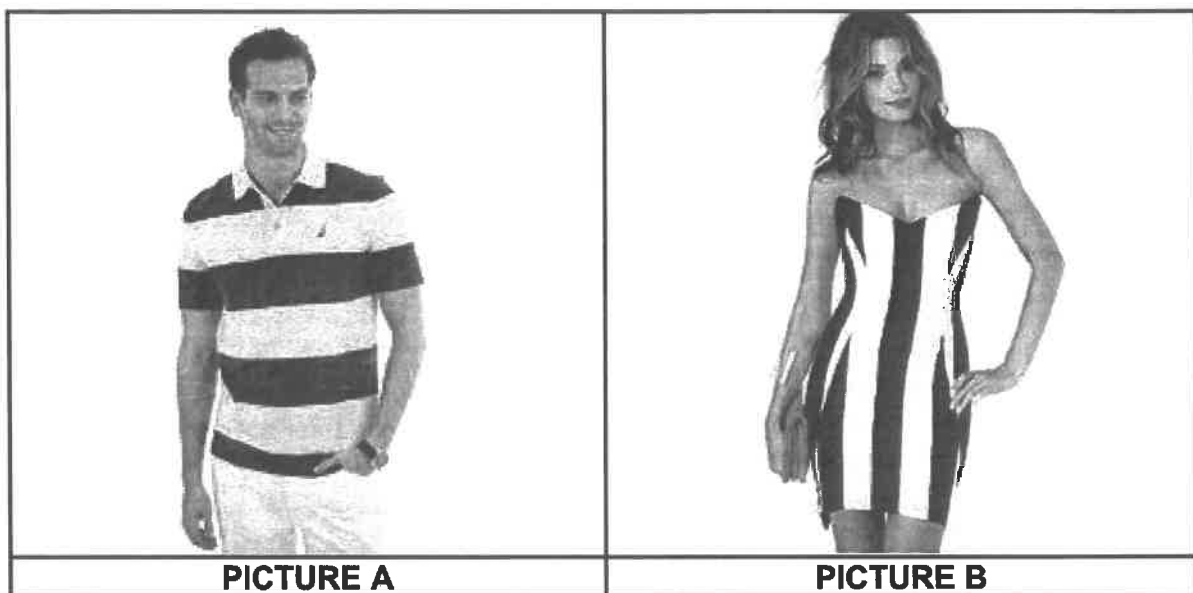
4.3.1 Absorbency (2)

4.3.2 Elasticity (2)

4.4 Describe TWO characteristics of each of the following body shapes. Tabulate your answer as follows:

Body shape	Characteristics
4.4.1 Triangular or A-frame	(2)
4.4.2 Hourglass frame	(2)
4.4.3 Apple or oval frame	(2)

4.5 Study the pictures **A** and **B** below and answer the questions that follow.



4.5.1 Explain how rhythm has been achieved in picture **A**. (2)

4.5.2 Evaluate the suitability of the outfit in picture **A** for a tall and very slender man. (5x1)(5)

4.5.3 Analyse the suitability of the outfit in picture **B** for a short and stout lady. (3x1)(3)

[30]

**GRAND TOTAL 75**